

## 1.1 Install Zonae Cogito, front-end for Marxan



**Please note that Zonae Cogito is not compatible with Mac OS.**

### 1.1.1 Map Window Active X control

Before we install Zonae Cogito we are going to install Map Window Active X control following the next steps:

- Ensure you are logged in as an administrative user
- Run "C:\IntroMarxan\Install\MapWindow\MapWinGIS45OCXOnly.exe"
- Use all default settings to complete the install
- It may also be necessary to issue the following command in a startup script to register the Map Window active X component: regsvr32  
"C:\Program Files\Common Files\MapWindow\MapWinGIS.ocx"
- If during the installation you get an Error message similar to "Unable to register OCX MapWinGIS.ocx", please select the "Ignore" option



If you are using **Windows7 or Vista**, you may need to temporarily disable UAC (User Access Control) in to register the Map Window ActiveX control. This will be necessary if step 2 above does not register the map control on your system. This may be apparent as very slow performance of the map control, or as a runtime error when attempting to use the map control. To temporarily disable UAC follow these steps:

- ❖ Ensure you log in as an administrative user,
- ❖ Disable UAC with the registry editor:
  1. Run the registry editor (RegEdit) by typing regedit at command prompt or at Run in Start menu.
  2. Locate following registry key:  
HKEY\_LOCAL\_MACHINE\Software\Microsoft\Windows\CurrentVersion\Policies\System
  3. Locate the following REG\_DWORD value: EnableLUA
  4. Set the value of EnableLUA to 0.
  5. Reboot the computer
- ❖ Register the active X control;  
**On a 64 bit OS:** regsvr32.exe "c:\Program Files (x86)\Common Files\MapWindow\MapWinGIS.ocx"  
**On a 32 bit OS:** regsvr32.exe "c:\Program Files\MapWindow\MapWinGIS.ocx"
- ❖ Enable UAC by setting EnableLUA to 1 with the registry editor,

- ❖ Reboot the computer.

### 1.1.2 Install Zonae Cogito

- Ensure you are logged in as an administrative user
- Run "C:\IntroMarxan\Install\ZonaeCogito174\ZonaeCogito174\SETUP.EXE"
- Use all default settings to complete the install
- If the install wizard does not open – copy and paste the contents of the ZonaeCogito174 folder directly into the computer's temp folder (copy all the files and paste them in, don't copy and transfer the folder)



The latest version of ZonaeCogito174 includes **32 and 64 bit versions** of native compiled executables for Windows, while the earlier release (ZonaeCogito154) is only compatible with **32 bit operating systems**.

## 1.2 Install R

- Ensure you are logged in as an administrative user
- Download the latest version of R from <https://cran.r-project.org/>
- Use all default settings to complete the install

## 1.3 Install R packages

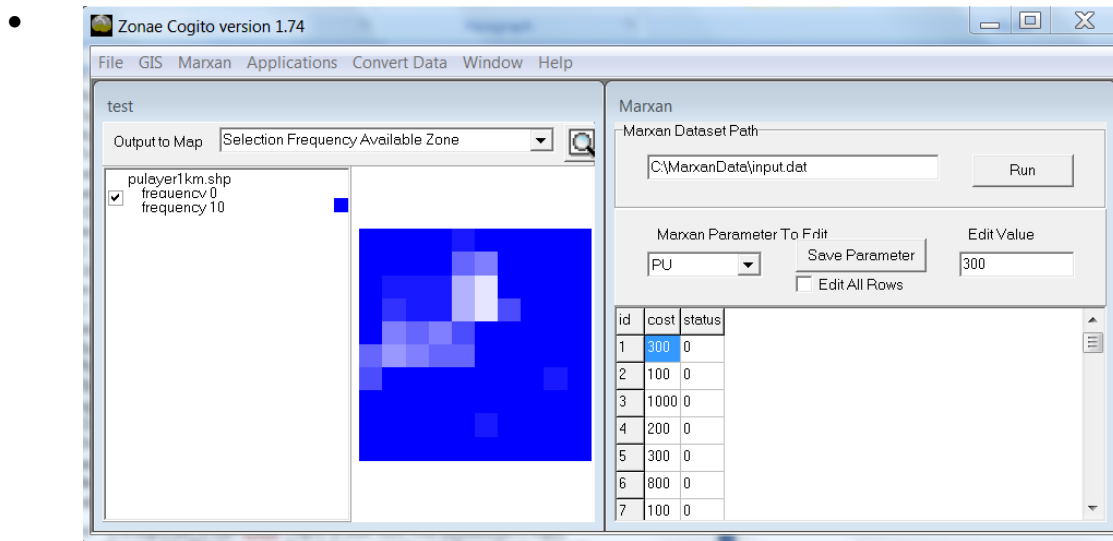
- Ensure you are logged in as an administrative user
- Launch the R application from the start menu
- Within the R application, from the "Packages" menu, click "Install package(s) ..."
- Select the CRAN mirror closer to you (e.g., if in Vancouver, Canada, select "Canada (BC)"), and click OK
- Select the following packages: "labdsv", "rgl", "tkrgl" and "vegan" and click "OK"
- You can close R now.

## 1.4 Finalising the install and testing Zonae Cogito

- Reboot the computer so all the application installed are ready for use
- Ensure you log in as an administrative user
- Run Zonae Cogito with the administrative login
- To test whether Zonae Cogito is functioning correctly, create a new project (name it something like "test")
- Check the "Include Marxan Database" box and browse to wherever your "MarxanData" folder is from the Marxan download materials.
- Under "Locate GIS Layers to Display" browse to and select the file:

“pulyer1km.shp”

- Ensure that "PUID" appears under the "Selected Planning Unit Key Field" heading
- Click "OK"
- Two different windows within Zonae Cogito should appear
- Click on Run
- A figure should appear in one of the windows if the installation was successful (see image below). You should also see a spinning cube which indicates the Zonae Cogito and R are communicating.



It is important to start Zonae Cogito at least once with administrative login, otherwise MapWindow ActiveX will fail to initialise and Zonae Cogito will not function.